

# **GRI Sector Standard Project for Financial Services**

## **Capital Markets Technical Committee member biographies**

September 2023 (updated April 2025)

# Contents

Technical committee members.....	3
Mark De Silva .....	3
Jeroen Nijhoff.....	3
Barbara Zonneveld .....	4
Astrid Durgaram.....	4
Delilah Rothenberg .....	5
Nathalie Dogniez .....	5
Michael Tang .....	6
Daniele Spagnoli.....	6
Adams Koshy .....	7
Maria Ruiz Sierra .....	7
Mahesh Jayakumar .....	8
Neha Bhatia .....	8
Yasser Mounsif.....	8
Lisa Nathan .....	9

# Technical committee members

In accordance with due process, the Global Sustainability Standards Board (GSSB) has selected the following members to participate in the GRI Capital Markets Technical Committee. The members represent diverse, multi-stakeholder backgrounds and bring an excellent combination of relevant knowledge and experience in the capital markets sector and its role in sustainable development.



## Mark De Silva

*Director and Global Climate Engagement Lead, HSBC Asset Management*

*Constituency: Business Enterprise*

Mark De Silva is responsible for leading engagements with key companies globally, from developing regions in Asia to the UK, including many in the financial services sectors, with the aim of improving ESG performance and disclosure.

He previously worked as an Associate Director (ESG) for AIA Group, responsible for developing the Group's ESG strategy and reporting and engagement initiatives with internal and external stakeholders.

Mark De Silva also worked as a consultant across sectors, leading the creation of sustainability strategies, reporting efforts, policy development, and stakeholder engagement in conducting materiality assessments for Hong Kong-listed companies since 2013.



## Jeroen Nijhoff

*Corporate Sustainability Officer, Robeco*

*Constituency: Business Enterprise*

Jeroen Nijhoff has 20 years of experience in asset management and banking. Currently responsible for the sustainability report and corporate sustainability.

He has previous experience as a project director responsible for the replacement of the global HR and finance tooling at Robeco.

Jeroen Nijhoff has Strong skills in sustainability, GRI, International Financial Reporting Standards (IFRS), and managerial finance. He holds an MSc in Controlling.



## Barbara Zonneveld

*Head of ESG Reporting and Disclosure, State Street*

*Constituency: Business Enterprise*

Barbara Zonneveld has over 15 years experience in the financial sector in various roles, including audit, consulting, and developing data and analytics solutions.

She participated in various standard-setting and regulatory initiatives, including in the International Accounting Standards Board (IASB), working on the Fair Value and Insurance Contracts standards, and in the European Insurance and Occupation Pensions Authority (EIOPA) working on delegated acts for the Solvency II directive.

Barbara Zonneveld gained sustainability reporting experience at Moody's Analytics. She was involved in designing the link between Moody's climate data and analytics solutions (such as carbon footprint data, climate scenario analysis, modeling, and ESG scores) and insurance clients' climate risk management and reporting needs.



## Astrid Durgaram

*Senior Legal and Tax Counsel, Stichting Pensioenfonds ABP*

*Constituency: Business Enterprise*

Astrid Durgaram is the Senior Legal and Tax Counsel at ABP, the pension fund for people working in the government and education sectors. In this role, she advises the board on legal and tax matters regarding the international asset portfolio and financial regulation. She is responsible for ABP's tax policy & partnerships, determining and monitoring asset management agreements as well as advising on corporate law matters such as restructuring and the governance of investment entities.



## Delilah Rothenberg

*Executive Director, Predistribution Initiative*

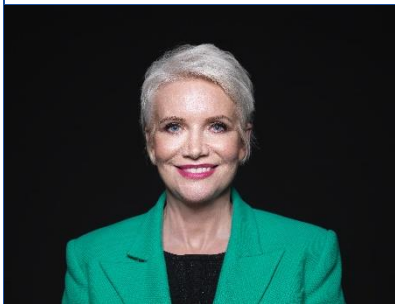
*Constituency: Civil Society Organization (non-profit organization)*

Delilah Rothenberg is Co-Founder and the Executive Director of the Predistribution Initiative (PDI), a multi-stakeholder nonprofit supporting investors in aligning their investment governance, financial analysis, and asset allocation practices with the principles of system-level investing and systematic stewardship.

She has nearly two decades of experience in finance across asset classes – particularly private capital markets – having worked with private equity investors, lenders, and project developers on growth financing, ESG integration, and impact strategy for over 12 years. She worked in sell-side equities with Bear Stearns and investment research with Gerson Lehrman Group (GLG).

Serves on the Council of Institutional Investors (CII) Markets Advisory Group, the Advisory Panel for the Capitals Coalition; is an advisor to For the Long Term (public treasurers focused on ESG)

Delilah Rothenberg has served on various committees, advisory groups, and working groups for the Sustainability Accounting Standards Board (SASB), Principles for Responsible Investment (PRI), and Global Impact Investing Network (GIIN), among others.



## Nathalie Dogniez

*Chairperson, Eurosif*

*Constituency: Civil society (non-governmental organization)*

Nathalie Dogniez is Chairperson at Eurosif and is an Independent Director, sitting on the boards of funds, fund managers, AIFM and non-profit organisations. Based in Luxembourg, Nathalie has more than 30 years of experience in the financial sector, auditing and advising funds and asset managers, and has spent more than 20 years focusing on ESG and sustainable finance. From 2014 to 2023, Nathalie worked for PwC Luxembourg where she led the AWM ESG EMEA practice as well as a very significant global ESG data technology project and the AWM EMEA regulatory practice. Prior to this, Nathalie was a partner within KPMG Luxembourg, where she held various management positions, including Head of Asset Management practice, Member of the Executive Committee and Chair of the Supervisory Board.



## Michael Tang

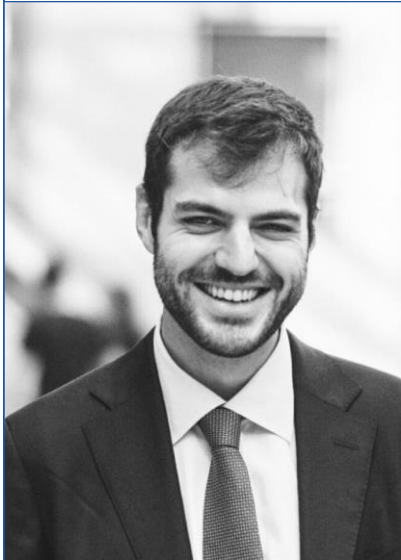
*Head of Listing Policy & Product Admission and Head, Singapore Stock Exchange*

*Constituency: Investment Institution*

Michael Tang is the Head of Listing Policy & Product Admission at Singapore Exchange Regulation (SGX RegCo), a Singapore Exchange (SGX Group) subsidiary that undertakes frontline regulatory functions and leads the Sustainable Development Office at SGX RegCo. He oversees listing policy and rules development, administers the admission of securities products, coordinates sustainability-related issues on the regulatory front and leads efforts to promote sustainability across stakeholder groups.

He is a member of the Advisory Board of the NUS Business School's Centre for Governance and Sustainability (CGS), a Management Committee member of Global Compact Network Singapore (GCNS), and a member of the Environmental, Social, and Governance Committee of the Singapore Institute of Directors (SID).

Michael Tang also co-leads the Green Finance Industry Taskforce disclosure workstream convened by the Monetary Authority of Singapore.



## Daniele Spagnoli

*Vice President ESG Methodologies, Moody's*

*Constituency: Investment Institution*

Responsible for the development of methodologies to assess ESG-related risks and opportunities for corporations, private companies, and financial institutions at Moody's Analytics.

He held previous roles as a Research Manager at Vigeo Eiris, Manager of the Sustainability practice of Deloitte in Italy, and supported the development of the G4 Sustainability Reporting Guidelines as Research Assistant at the GRI in 2012.

He holds an M.Sc. in Accountancy and Control and a B.Sc. in Economics and Business Administration.





## Adams Koshy

*Senior Specialist, Sustainable Markets, Principles of Responsible Investment (PRI)*

*Constituency: Investment Institution*

Adams Koshy is Senior Specialist with the Principles for Responsible Investment (PRI) in its Driving Meaningful Data team. He works on investor data needs and leads the development of a framework to identify decision-useful corporate sustainability data for responsible investors.

In 2021, he led PRI's research to provide an overview of the ESG reporting landscape for investors, which completed a high-level review of 120 reporting instruments across nine jurisdictions and five global initiatives.

In 2022, he supported the development of PRI's consultation response on the exposure drafts from the International Sustainability Standards Board (ISSB) and the European Financial Reporting Advisory Group (EFRAG).

Adams Koshy is currently working on the ongoing consultation of the draft framework from the Taskforce on Nature-related Financial Disclosure (TNFD).



## Maria Ruiz Sierra

*Head of Sustainable Investment, Sura Investment Management*

*Constituency: Investment Institution*

Maria Ruiz Sierra has over 10 years of experience in finance positions in both the private and public sectors, focusing on environmental and social impact. She is the Head of Sustainable Investment at SURA Investment Management, a leading Latin American asset manager. Has led the company's sustainable investment strategy and developed methodologies to effectively integrate ESG and climate analysis into portfolio management in traditional and alternative assets. She led SURA's working group on corporate sustainability and has promoted joint ESG projects with colleagues from Grupo SURA's insurance and pension fund businesses.

Maria Ruiz Sierra is also the co-founder of LANetwork, a research and content platform on sustainability in Latin America, and a member of the advisor committee for PRI Latam.



## Mahesh Jayakumar

*Fixed Income Research Analyst, MFS Investment Management*

*Constituency: Investment Institution*

Mahesh Jayakumar is the Fixed Income research analyst focusing on ESG issues at MFS Investment Management, responsible for helping lead the integration effort within the fixed income investment team.

He is a member of various sustainability working groups responsible for guiding the firm-wide ESG investment strategy and assessing global collaborative initiatives and partnerships.

He previously worked with State Street for a decade culminating as a Senior ESG Investment Strategist at State Street Global Advisors. Other positions included Senior Fixed Income Portfolio Manager in the Global Fixed Income, Cash and Currency team, and managed portfolios in sectors such as Global Sovereigns and Agencies, US Investment Grade Credit, and Green Bonds.



## Neha Bhatia

*Partner Sustainable Finance, ERM*

*Constituency: Mediating Institution*

Neha Bhatia has 18 years of financial markets experience, having worked with leading investment banks (Barclays, JP Morgan) in London and Singapore with the successful delivery of structured investment funds business in EMEA and Asia.

She is part of the ERM India leadership team in the Corporate Sustainability and Climate Change practice. She has overseen the strategic growth, sustainable investment, and operational resilience of Swiss Re's reinsurance business in India.

Neha was instrumental in developing the global emerging market investment risk framework, including solvency capital adequacy modelling and stress testing for multi-asset class EM investments at Swiss Re.



## Yasser Mounsif

*Head of Corporate Finance and Financial Disclosure, Morocco Capital Markets Authority*

*Constituency: Mediating Institution*

Yasser Mounsif has over 15 years of experience at the Morocco Capital Markets Authority. He previously worked as a Senior Financial Analyst and head of Corporate Finance before moving to his current role.

He is Co-Chair of the Measurement Working Group of the Sustainable Finance and Banking Network hosted by the IFC.





## Lisa Nathan

*Senior Investor Engagement Advisor, UNI Global Union*

*Constituency: Labor Union*

Lisa Nathan's current role at UNI Global Union includes representing 140 trade unions and 3 million workers in the finance sector. She engages with a wide range of actors across capital markets, particularly regarding the social impacts of their stewardship and investment decisions.

She is part of the Network Secretariat of the Committee on Workers' Capital and has developed resources regarding expectations and responsibilities for different actors across the investment chain.

She coordinates UNI's work on human rights due diligence, including participating in relevant dialogue with banks on their human rights due diligence activities.

Lisa Nathan previously worked as a Senior Consultant with Impactt and Lead of ShareAction's Good Work Program.